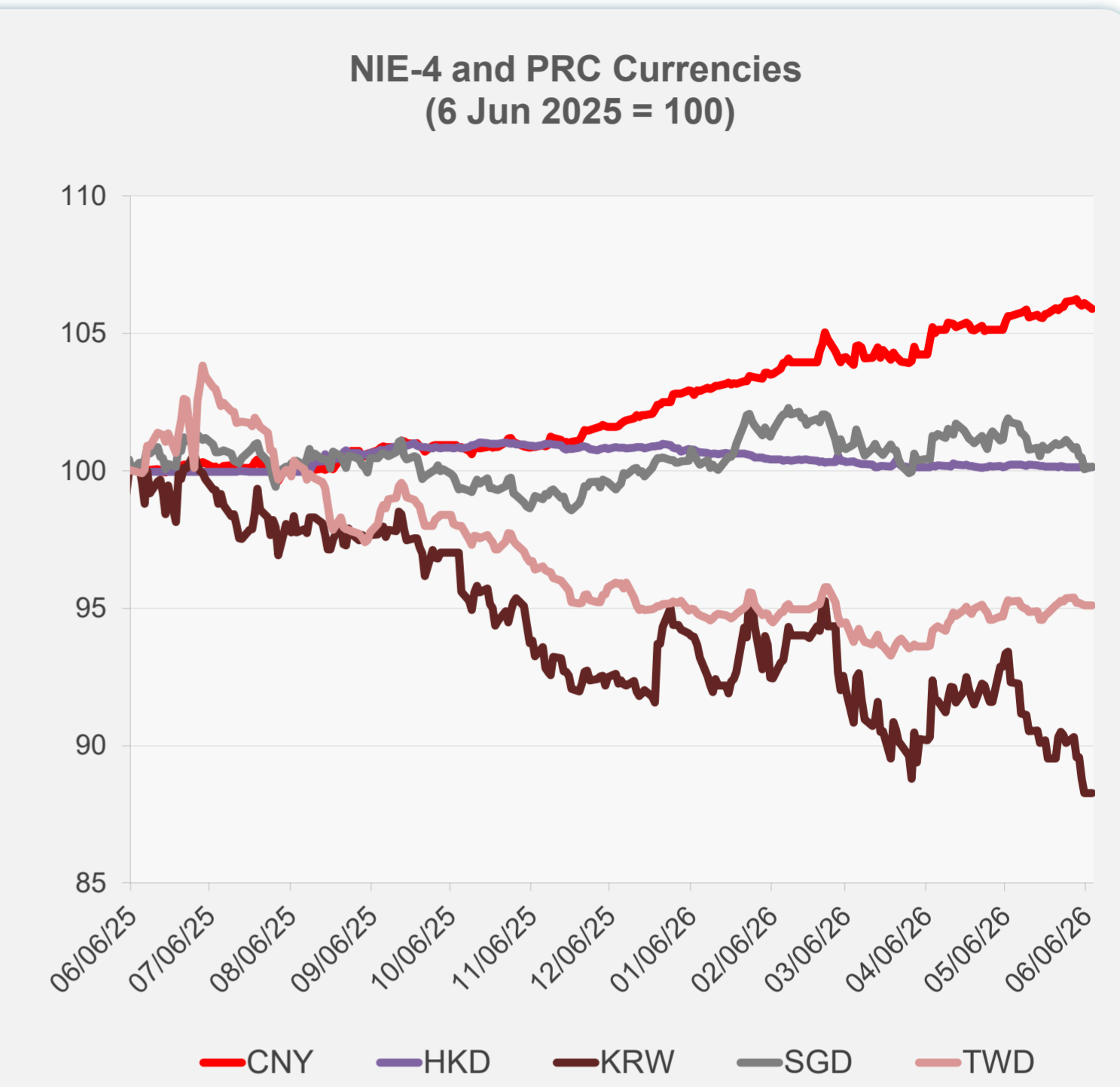
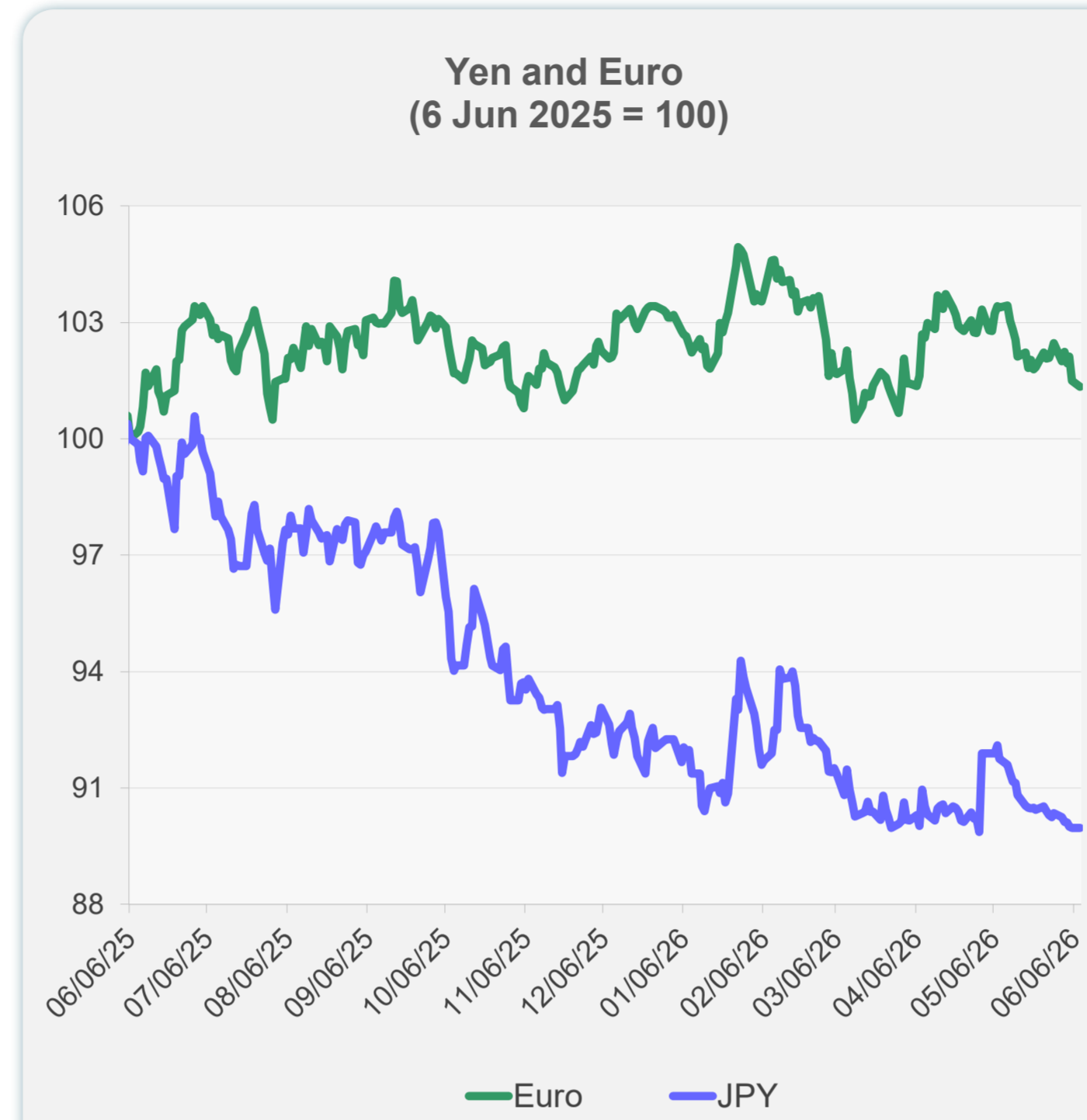
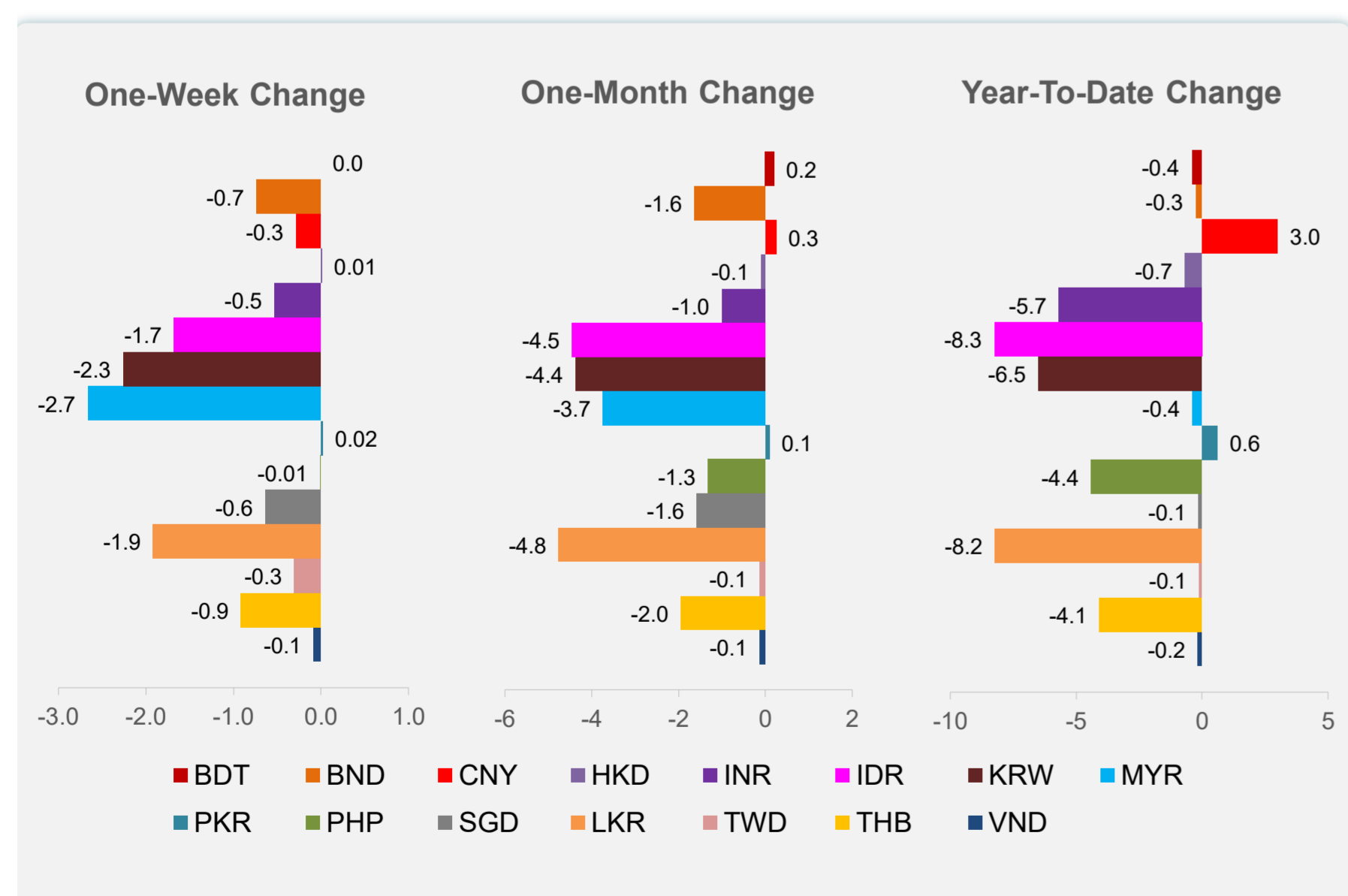
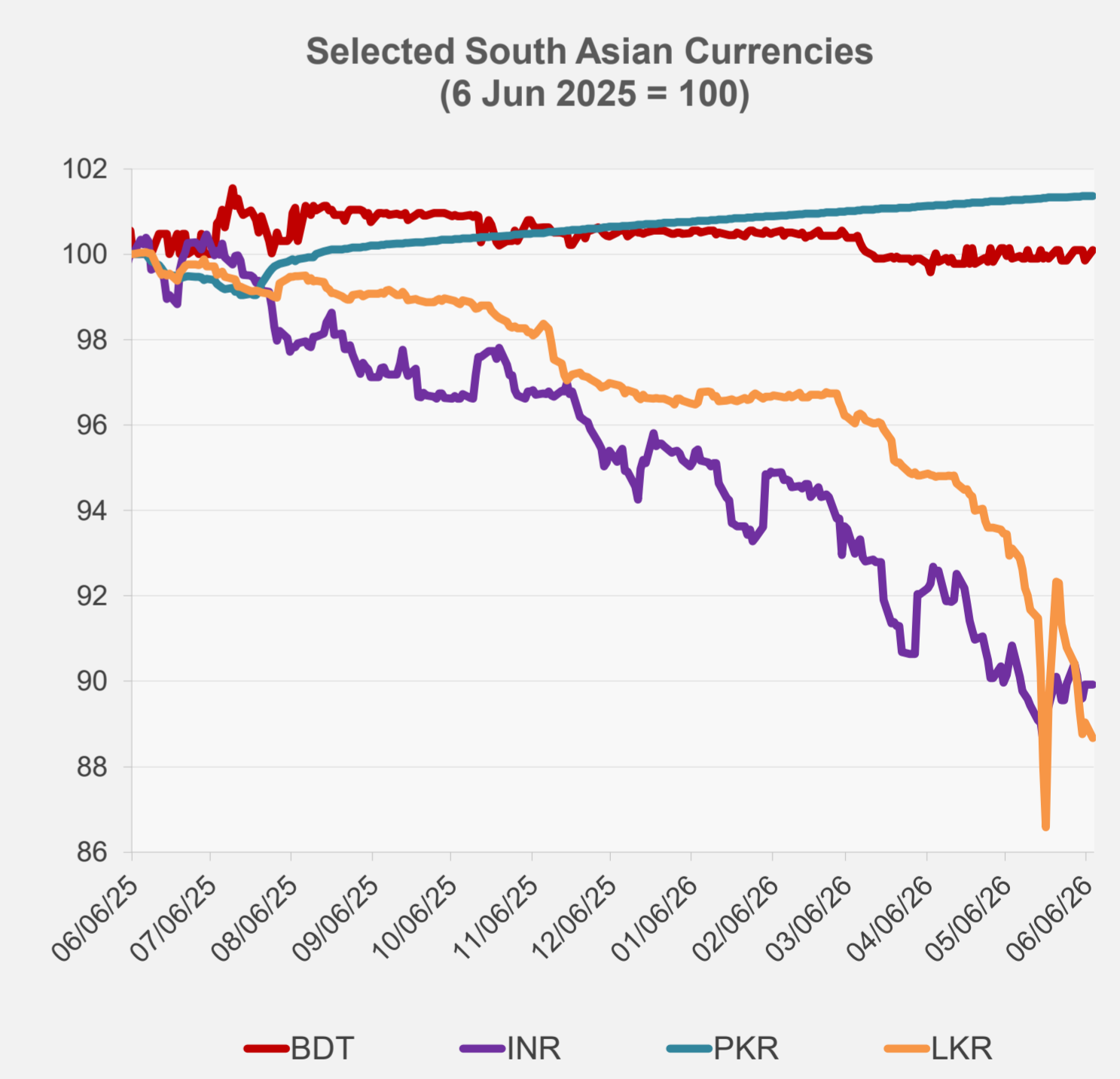
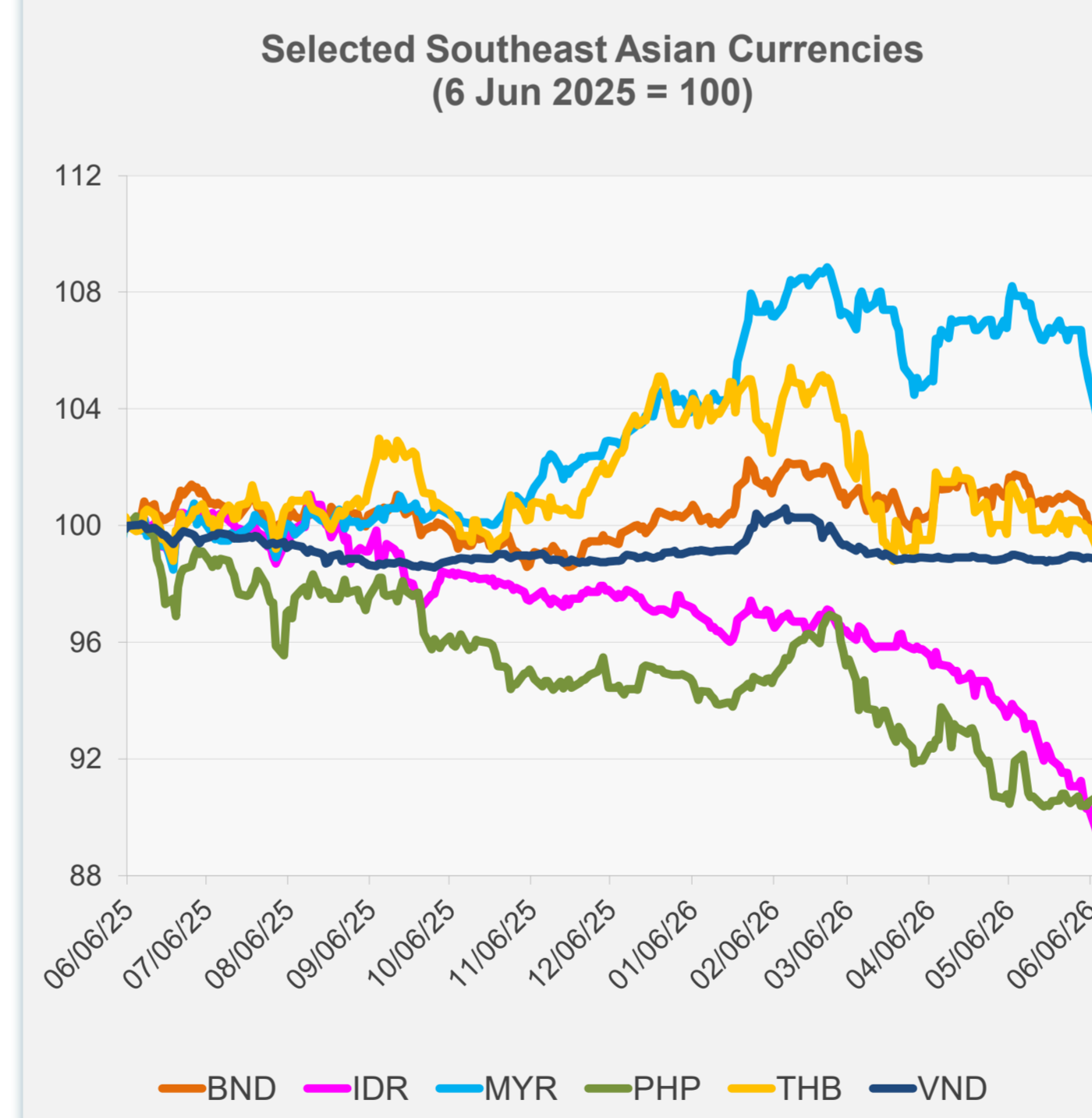


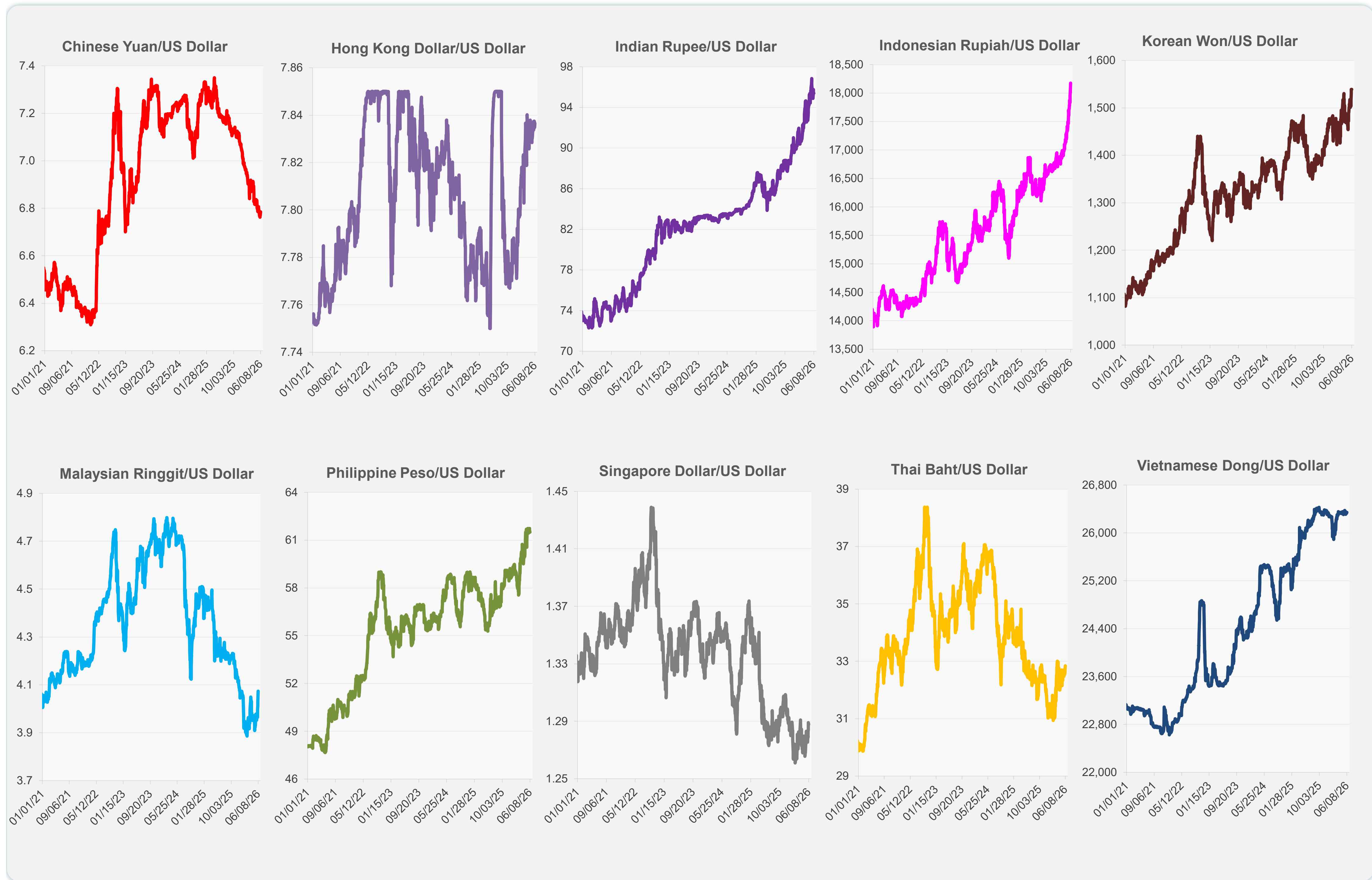
	Latest Closing	% change from Previous Day	% change from 01-Jan-26
Euro	0.87	-0.15	-1.72
Japanese yen (JPY)	159.95	0.00	-2.48
Bangladeshi taka (BDT)	122.75	0.24	-0.41
Brunei dollar (BND)	1.29	0.19	-0.26
Chinese yuan (CNY)	6.78	-0.20	3.00
Hong Kong dollar (HKD)	7.84	-0.02	-0.68
Indian rupee (INR)	95.40	0.00	-5.68
Indonesian rupiah (IDR)	18,175.00	-0.88	-8.25
Korean won (KRW)	1,539.10	0.00	-6.50
Malaysian ringgit (MYR)	4.07	-1.12	-0.38
Pakistan rupee (PKR)	278.40	0.00	0.61
Philippine peso (PHP)	61.51	0.21	-4.39
Singapore dollar (SGD)	1.29	0.09	-0.14
Sri Lanka rupee (LKR)	337.35	-0.40	-8.22
Taipei,China NT dollar (TWD)	31.48	0.00	-0.12
Thai baht (THB)	32.85	-0.65	-4.08
Vietnamese dong (VND)	26,344.50	-0.06	-0.17



NIE = Newly Industrialized Economies



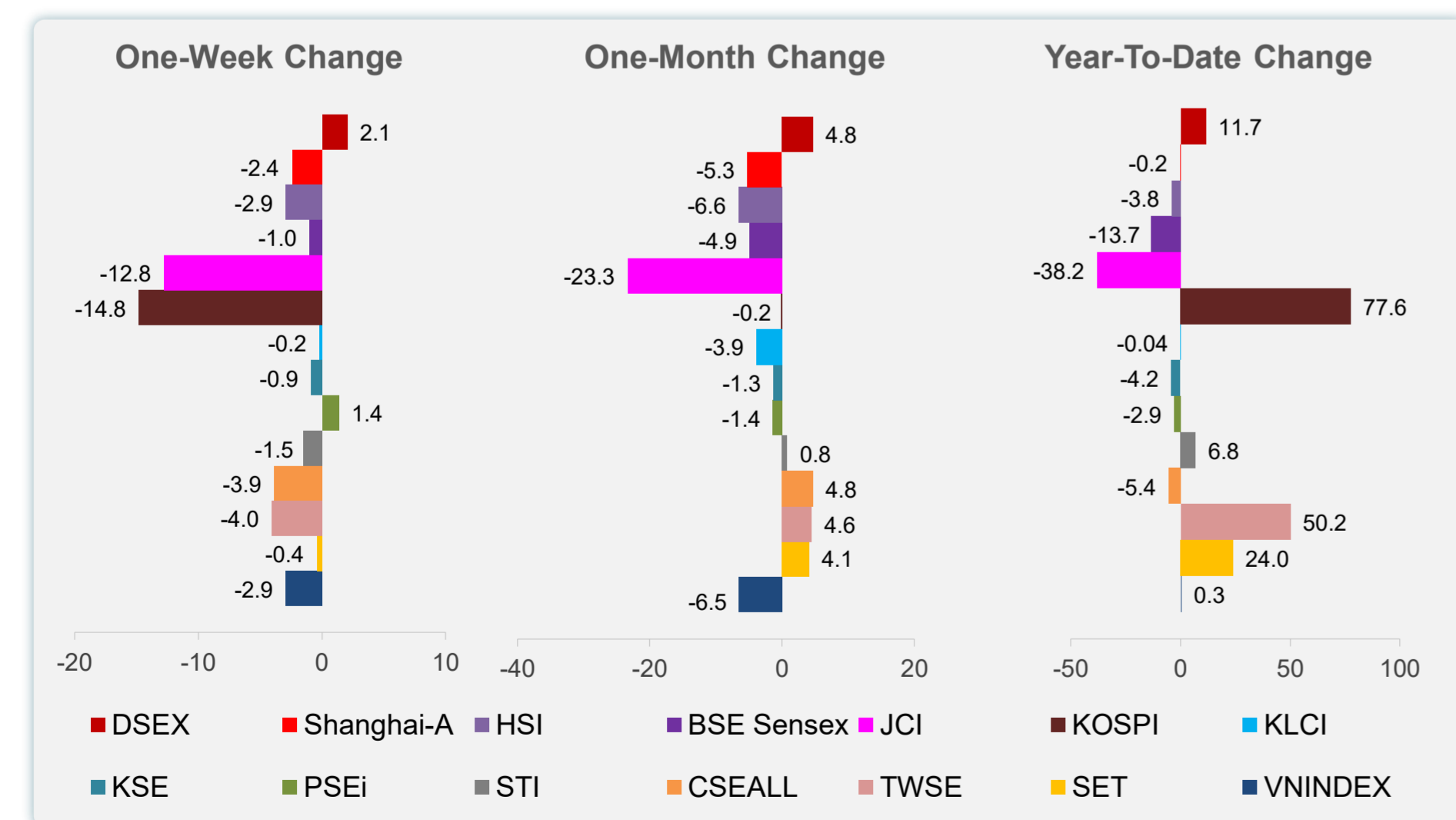
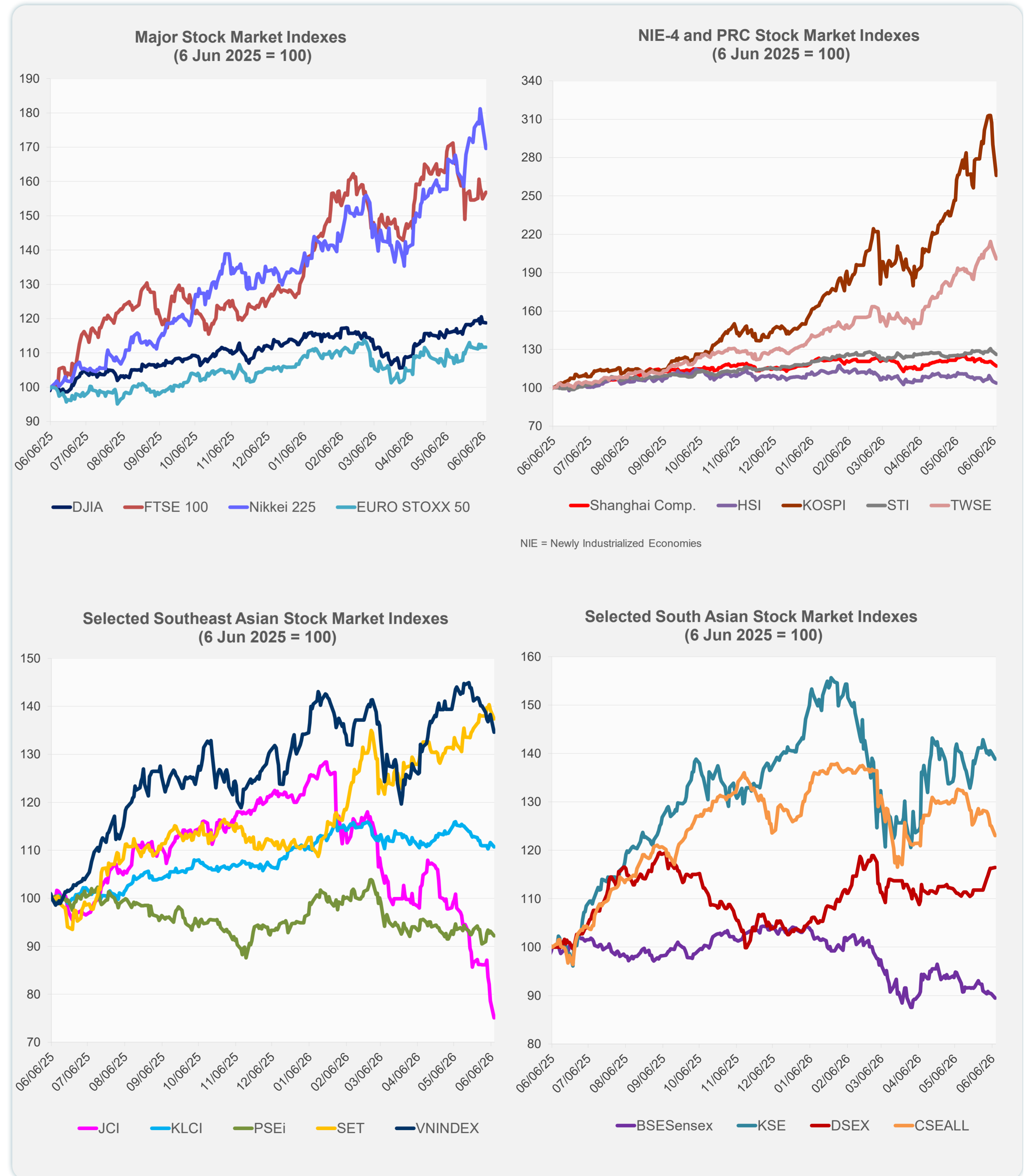
Note: Negative/Decreasing values indicate depreciation of local currency, and positive/increasing values indicate appreciation.
Source: ADB calculations using data from Bloomberg and Haver Analytics.



Source: Haver Analytics.

Daily Market Watch
STOCK INDEXES

	Latest Closing	% change from Previous Day	% change from 01-Jan-26
US Dow Jones Ind Avg	50,786.01	-0.16	5.66
US NASDAQ	25,929.66	0.86	11.56
US S&P 500	7,405.73	0.30	8.18
UK FTSE 100	13,860.59	1.22	23.08
EURO STOXX 50	6,062.29	0.00	4.68
Japan NIKKEI 225	64,024.60	-3.85	27.19
Bangladesh DSEX	5,483.00	0.15	11.66
PRC Shanghai Comp.	3,959.34	-1.70	-0.24
Hong Kong, China HSI	24,657.06	-1.22	-3.80
India BSE Sensex	73,524.26	-0.97	-13.69
Indonesia JCI	5,342.14	-4.52	-38.22
Korea, Rep. of KOSPI	7,484.41	-8.29	77.60
Malaysia KLCI	1,679.52	-0.82	-0.04
Pakistan KSE 100	169,107.00	-0.99	-4.17
Philippines PSEi	5,879.41	-0.99	-2.87
Singapore STI	4,963.67	-1.71	6.83
Sri Lanka CSEALL	21,403.28	-1.57	-5.40
Taipei, China TWSE	43,502.78	-3.48	50.20
Thailand SET	1,561.68	-1.32	23.98
Viet Nam VNINDEX	1,790.53	-2.63	0.34



Sources: ADB calculations using data from Bloomberg and CEIC Data Company.



Sources: ADB calculations using data from Bloomberg and CEIC Data Company.

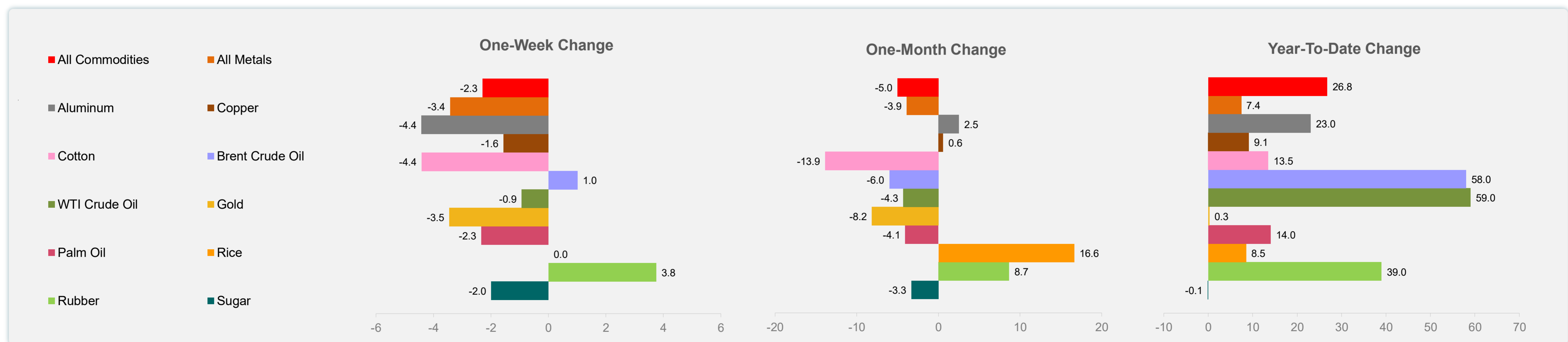
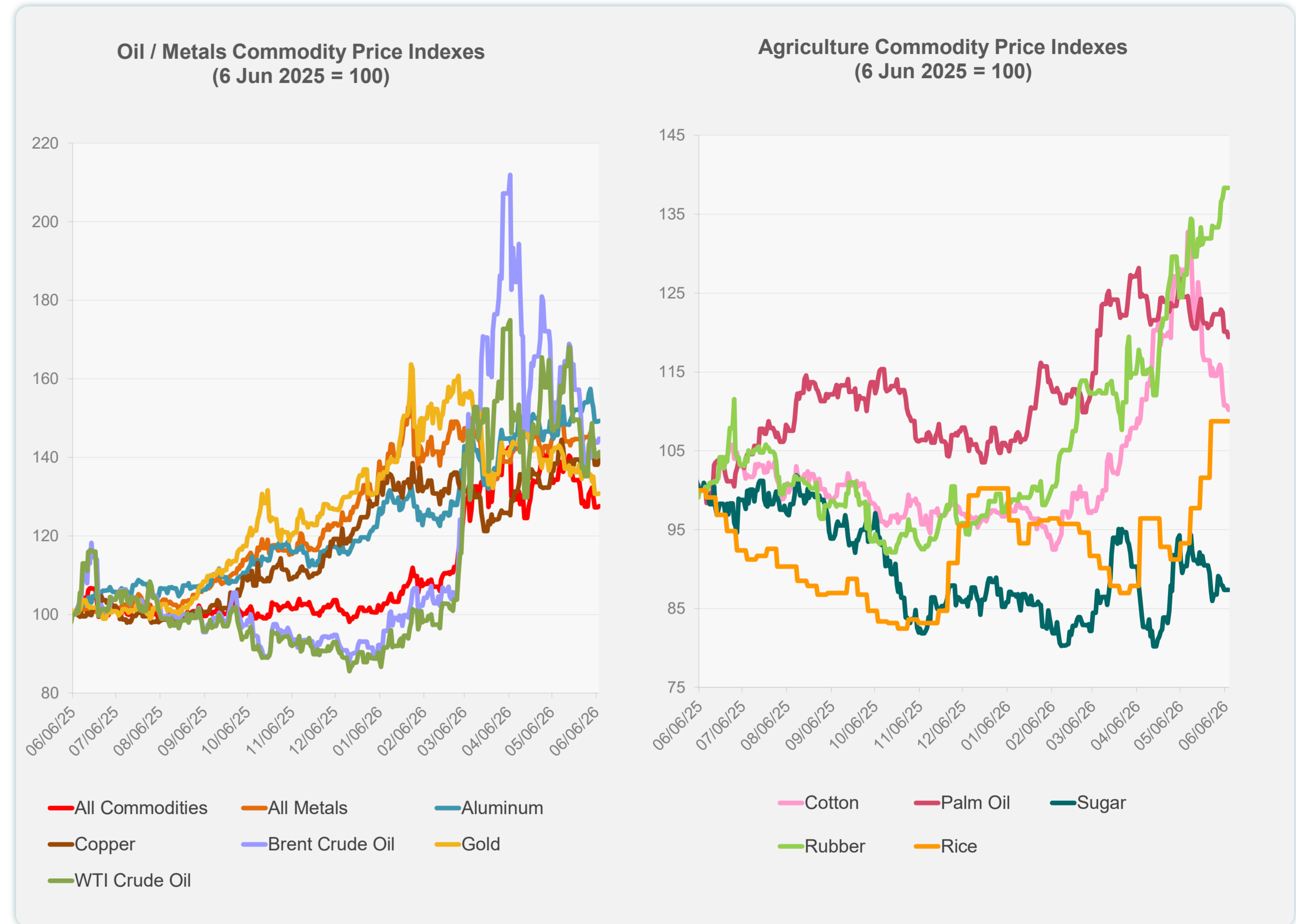
Daily Market Watch
COMMODITY PRICES

9 June 2026, 9:00 AM Manila

	Unit	Latest Closing	% change from Previous Day	% change from 01-Jan-26
S&P All Commodities	US\$	695.37	0.22	26.77
S&P All Metals	US\$	476.67	-0.02	7.42
Aluminum	US\$/metric ton	3,651.85	0.14	23.04
Copper	US\$/metric ton	13,592.08	0.75	9.14
Cotton	US cents/lb	70.39	-0.51	13.50
Brent Crude Oil	US\$/barrel	98.67	0.65	58.00
WTI Crude Oil	US\$/barrel	91.30	0.84	59.00
Gold	US\$/troy oz	4,330.17	0.04	0.25
Palm Oil	US\$/metric tonne	1,104.61	-0.58	14.04
Rice ¹	US\$/metric ton	484.00	0.00	8.52
Rubber ²	US\$/kg	298.80	0.00	38.98
Sugar	US cents/lb	14.77	0.00	-0.14

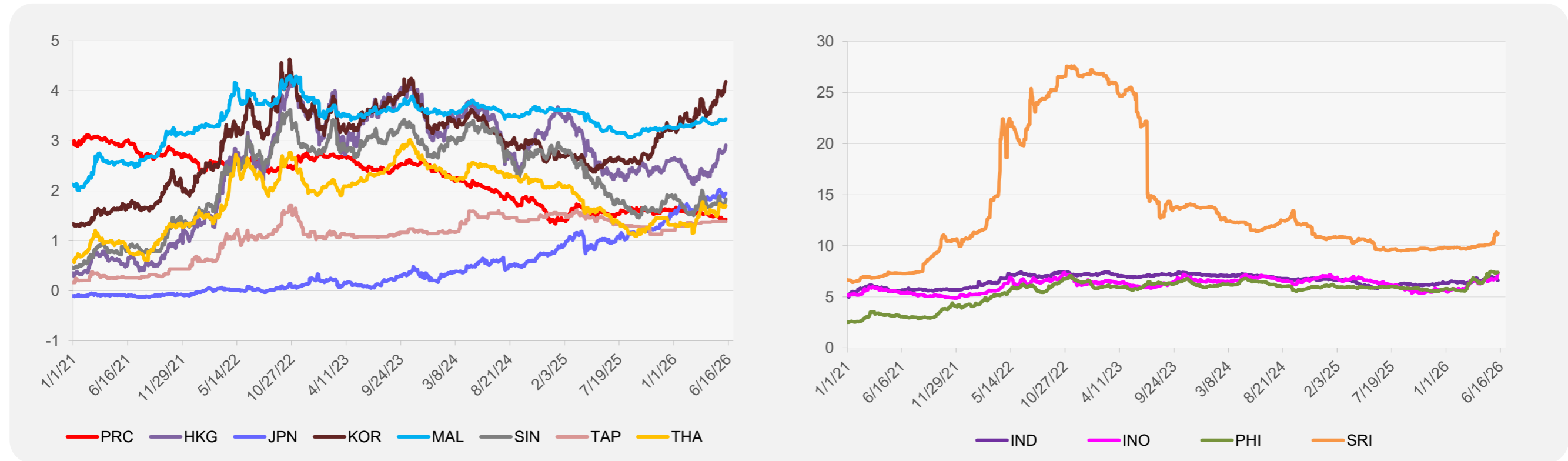
¹ Latest closing price from 27 May 2026.

² Singapore Exchange, Ribbed Smoked Sheet Rubber.

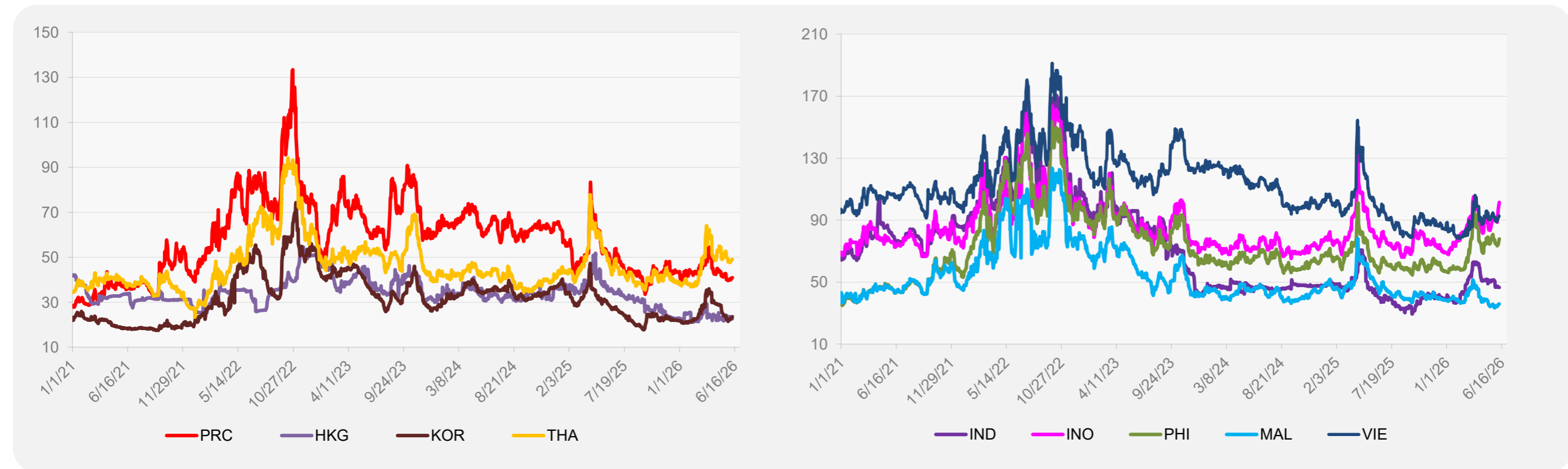


Source: ADB calculations using data from Bloomberg.

5-YEAR LOCAL CURRENCY GOVERNMENT BOND YIELDS (%)



5-YEAR CREDIT DEFAULT SWAP¹



¹ In USD and based on sovereign bonds.
Source: ADB calculations using data from Bloomberg.